
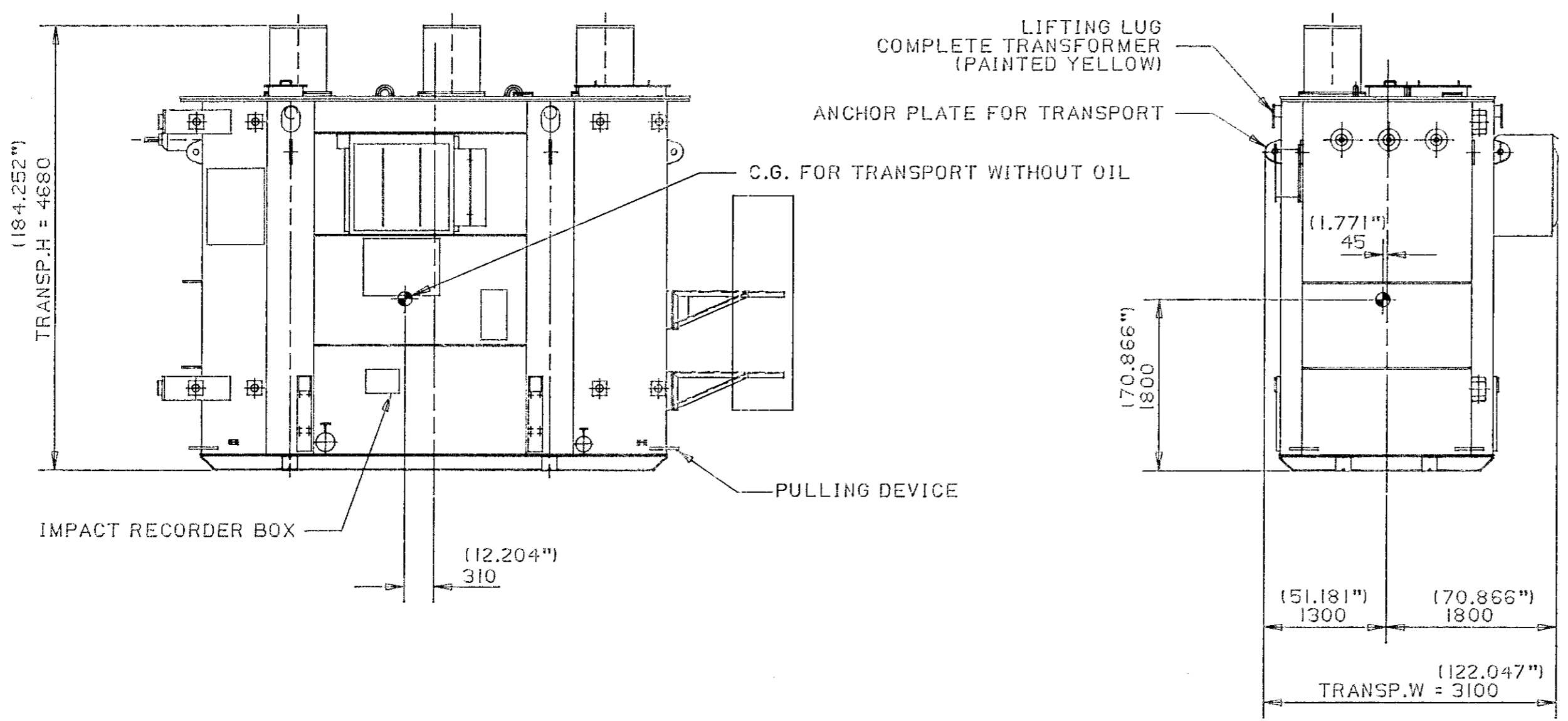
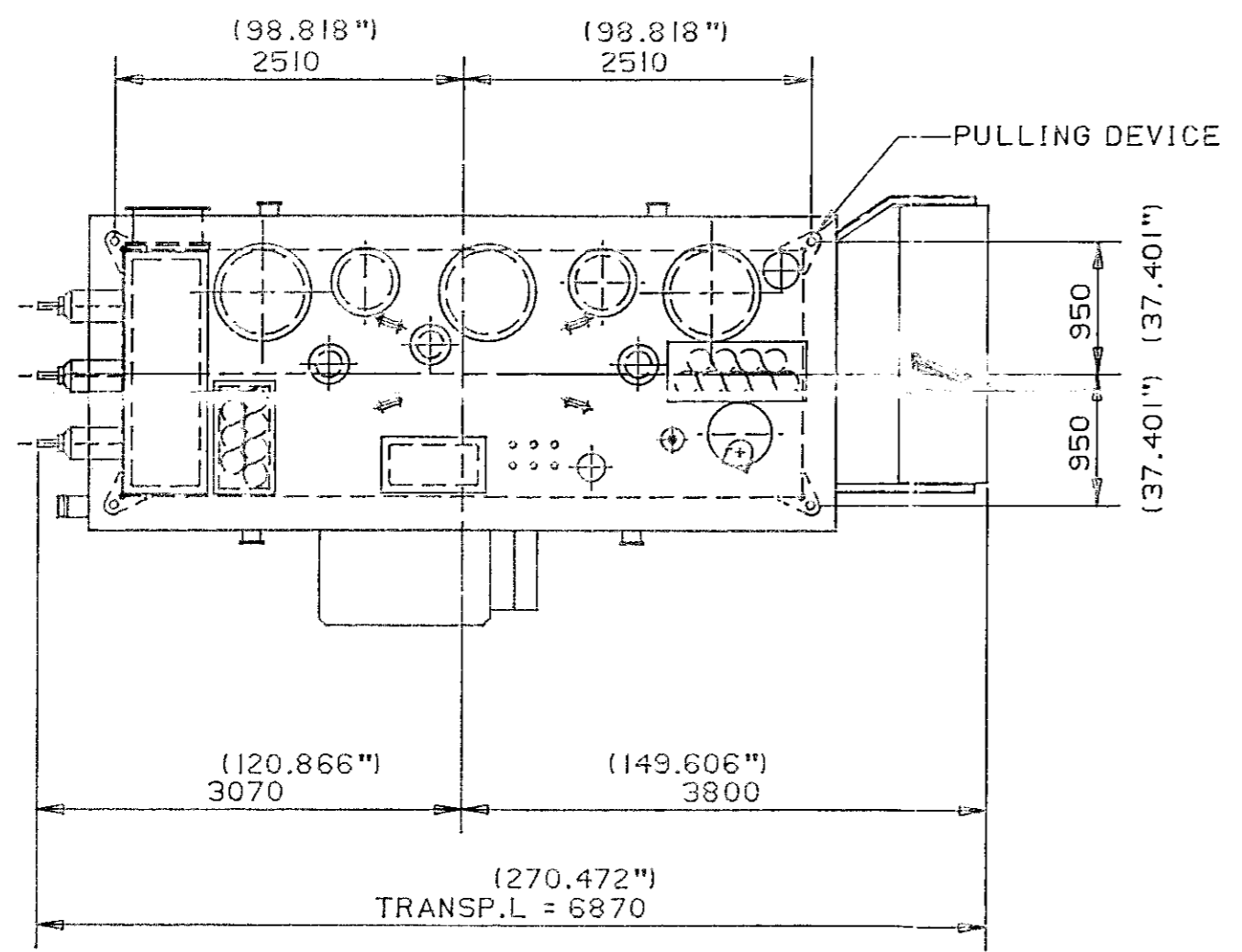


000 TOVER
 000 8000
 200
 1000 2000 400
 1000 2000 400
 315 1000 2000 400
 120 120 315 1000 2000 400
 30 120 315 1000 2000 400
 6 30 120 315 1000 2000 400
 3 6 30 120 315 1000 2000 400
 TOLERANCES FOR MEASURES WITHOUT TOLERANCES
 THIS DRAWING IS OUR PROPERTY AND MUST NOT BE REPRODUCED OR COPIED WITHOUT THE WRITTEN PERMISSION OF NATIONAL INDUSTRIAL
 PROJECT METHOD


 NATIONAL INDUSTRI		DESCRIPTION		DWG. NO.	
		TRANSPORT DRAWING		T1-204 514	
DRAWING CHECKED BY		PRODUCT		INTERNAL STANDARD	
DESIGN CHECKED BY		CUSTOMER/PLANT		REPL.	
DRAWN BY		SC.		DATE	
DATE		ERR. CRD. NO.		MFG.	
STR. CODE		QTY.		DATE	
DWG. NO.		ORDER NO.		SHEET	
JA		86-10-27		110-73355-58	



WEIGHTS	LBS	KG
TRANSP. WEIGHT WITH OIL - LEVEL 100 MM BELOW COVER	165350	75000
TRANSP. WEIGHT WITHOUT OIL	121260	55000
OIL - WEIGHT TOTAL	55560	25200
OIL - WEIGHT EXPANSION TANK	3750	1700
OIL - WEIGHT RADIATORS	4850	2200
OIL - WEIGHT OLTC	1100	500
OIL - WEIGHT 100 MM BELOW COVER	1770	800



AS BUILT

 MASSACHUSETTS BAY TRANSPORTATION AUTHORITY POWER SYSTEM IMPROVEMENTS BULK POWER FACILITY CONTRACT PICN2I				
LORD & MASS / MBTA		e	AS BUILT added	8708 11 AMG
P.O. NO. 7782-61-1380		d	REV.	87 06 10 JA
		c	REV.	87 03 27 JA
		b	REV.	87 02 12 JA
REV. ZONE	REV. DESC.	DATE	SIGN.	